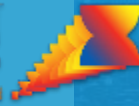




MEKONG
INSTITUTE

ASEAN
PRIZE
RECIPIENT 2021



GMS- City Nodes Network (G-CNN)

MI FLAGSHIP PROGRAMS
(2021-2025)



MEKONG
INSTITUTE



Strengthening Synergies

01 | INTRODUCTION

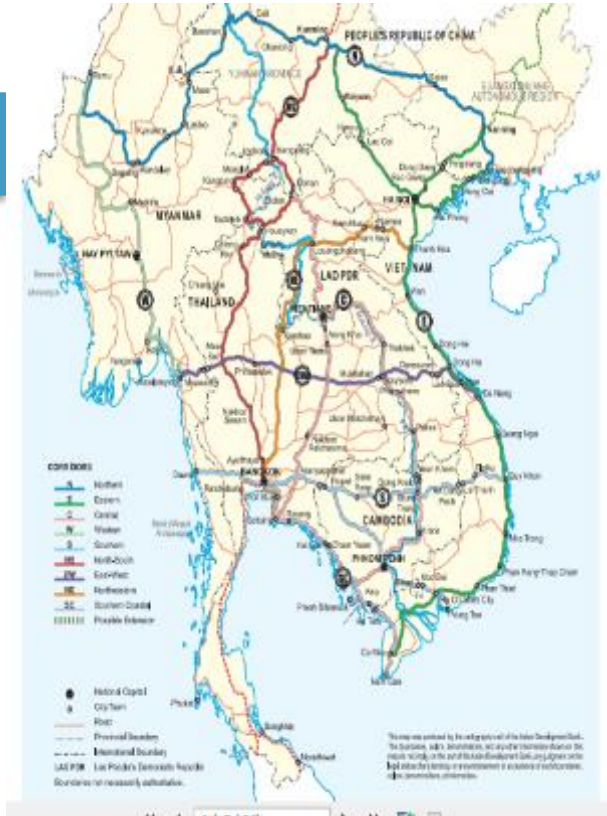
The GMS countries can be supported by transforming the transport corridors into economic corridors with strategic thrusts on planning and managing urban centers, economic corridors, and border areas.

City node as "Light House"

ensures that a city has the right balance and mix of development, and supports the development and implementation of long-term investment around transit stations, hubs, and important destinations within a city.

The city nodes as "Gateway to GMS" are geographically embedded within a particular location, which have the capacity and readiness for FDI, attracting investments, where its operations are inevitably affected by local factors, such as culture, the economy, the political and regulatory environment and other institutions

City centers are drivers of economic change and have close links with other twin city, provinces and rural areas.





With MI's strategic plan 2021 - 2025 is offering robust programs across core development themes.

MI SP can be found here <https://bit.ly/3hGwHjT>

G-CNN

will facilitate the leadership and capacity development, promoting the Public - Private Partnership (PPP) along the Regional Economic Corridors (REC) in the GMS.



STRATEGIC AREAS AND INITIATIVES



“For scaling up its cooperation and integration as to support the strategies and formation of participation and ownership of the project implementation”



MI initiates its programs with the development partners, GMS governments, and private sector within the GMS.



Overall benefits to GMS

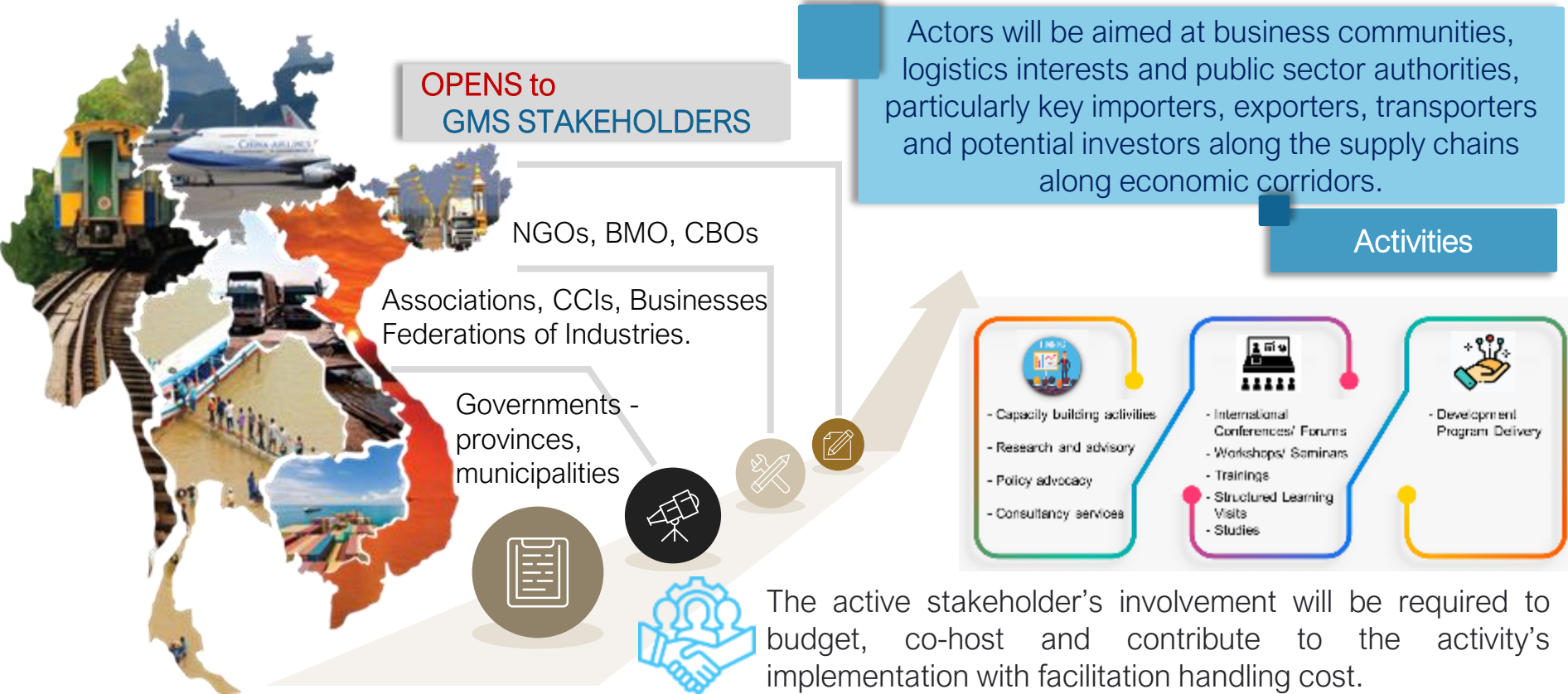
- Reinforce the capacity and efficiency of existing corridors;
- Multiply the return on investment of long-distance infrastructure;
- Support the decarbonization of the transport system and address congestion;
- Increase the visibility of GMS policies for citizens; and
- Improve the international accessibility for urban regions.

Objective



- inspire and motivate beneficiaries and stakeholders in participation, implementations working together with its resources
→ by pursuing through marketplace, framework policies, regulations, statutes and infrastructure investments.

04 | INVOLVEMENT & ACTIVITIES



OPENS to
GMS STAKEHOLDERS

Actors will be aimed at business communities, logistics interests and public sector authorities, particularly key importers, exporters, transporters and potential investors along the supply chains along economic corridors.

Activities

NGOs, BMO, CBOs

Associations, CCIs, Businesses Federations of Industries.

Governments - provinces, municipalities

- Capacity building activities
- Research and advisory
- Policy advocacy
- Consultancy services

- International Conferences/ Forums
- Workshops/ Seminars
- Trainings
- Structured Learning Visits
- Studies

- Development Program Delivery

The active stakeholder's involvement will be required to budget, co-host and contribute to the activity's implementation with facilitation handling cost.

nongovernment organizations (NGOs), business member organization, community-based organizations (CBOs),



Be part of
our Flagship Program
for expanding your
org. strategic scheme.

To make all this happen, public-sector leaders will need to move swiftly and decisively, bringing the whole of government to bear across significant priorities.

